

# Javier Lamela

(San Miguel de Tucumán, Argentina, 1978)

*The Rossinyol Tree*, 2021  
Photo print on RedBOND

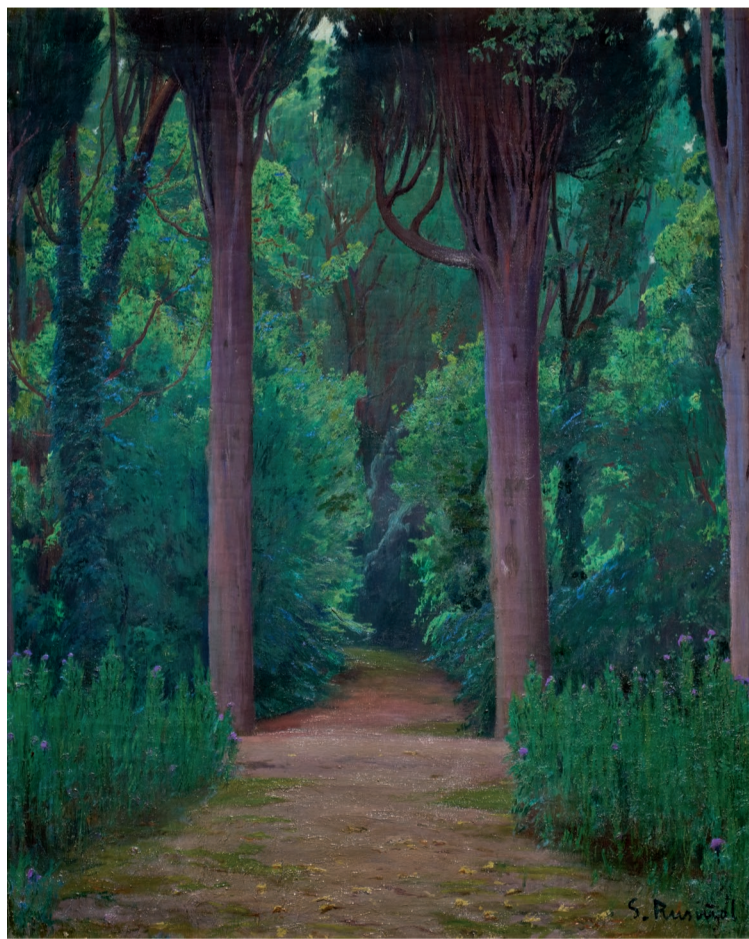
The Banco Santander Collection includes works by the Catalan artist Santiago Rusiñol on various themes. The paintings *Avenue of Plane Trees* and *Path in a Park*, are after his trip to Granada in 1898, a time when his work focused more on the theme of gardens than on natural landscapes; and his modernism was more synonymous with symbolism than with naturalism. In *Avenue of Plane Trees* Rusiñol paints the gardens of Aranjuez, one of his favourite pictorial motifs, even being appointed by Alfonso XIII as Honorary Gardener of the Royal Gardens of Aranjuez. Somewhat later is the work *Path in a Park*, in which the artist recreates the arrangement of the trees, which he arranges in the most symmetrical way possible without losing realism.

Javier Lamela has selected these paintings for their great evocative power and their capacity for attraction. As Rusiñol did in his day, Lamela makes trees the central element of the composition in search of a photograph capable of evoking the chromatic and luminous aspects that are so characteristic of the Catalan artist's work. To this end, Lamela undertakes a series of incursions into nature in search of connections with his work until he finds the tree that is the protagonist of his photograph, or as the artist himself defines it, "the perfect tree, endowed with great expressive force, high plasticity, chromatic vigour and formal energy. A tree capable of attracting and inviting passers-by to enter and lose themselves in nature, despite being in the city centre."

## SELECTED WORKS FROM THE BANCO SANTANDER COLLECTION



1



2

1. **Santiago Rusiñol** (Barcelona, 1861 - Aranjuez, Madrid, 1931)  
*Paseo de los plátanos* [Avenue of Plane Trees], 1916

2. **Santiago Rusiñol** (Barcelona, 1861 - Aranjuez, Madrid, 1931)  
*Sendero en un parque* [Path in a Park], ca. 1920-1925